

ELEVATION SHEET NOTES

1. PAINTED STUCCO FINISH ON MASONRY/ CONCRETE SUBSTRATE. 2 COAT WATERPROOF COATING. PAINT COLOR : MOONSHINE. BENJAMIN MOORE OC-56
2. PAINTED STUCCO FINISH ON MASONRY/ CONCRETE SUBSTRATE. 2 COAT WATERPROOF COATING. PAINT COLOR : OLYMPUS WHITE. SHERWIN WILLIAMS SW 6253.
3. PAINTED STUCCO FINISH ON MASONRY/ CONCRETE SUBSTRATE. 2 COAT WATERPROOF COATING. PAINT COLOR : AFRICAN GRAY. SHERWIN WILLIAMS SW 9162.
4. PAINTED STUCCO FINISH ON MASONRY/ CONCRETE SUBSTRATE. 2 COAT WATERPROOF COATING. PAINT COLOR : GRIZZLE GRAY. SHERWIN WILLIAMS SW 7088.
5. IMPACT RESISTANT ALUMINUM SLIDING GLASS DOOR SYSTEM AT LIVING UNITS. FRAME COLOR: BLACK. GLASS COLOR: BRUE/GREEN.
6. IMPACT RESISTANT ALUMINUM WINDOWS AT LIVING UNITS. FRAME COLOR: BLACK. GLASS COLOR: BRUE/GREEN.
7. PAINTED ALUMINUM RAILING. TOP RAIL AT 42" ABOVE FINISHED FLOOR. COLOR:BLACK.
8. PAINTED ALUMINUM RAILING. 18" HIGH OVER 24" KNEE-WALL. COLOR:BLACK.
9. IMPACT RESISTANT ALUMINUM STOREFRONT SYSTEM. FRAME COLOR: BLACK. GLASS COLOR: BRUE/GREEN.
10. CUSTOM PAINTED METAL CANOPY WITH PAINTED METAL RAISED LETTER BUILDING SIGN. SIGN UNDER SEPARATE PERMIT.
11. IMPACT RESISTANT GLASS RAILINGS W/ ALUMINUM TOP RAIL. TOP RAIL AT 42" ABOVE FINISHED FLOOR. FRAME COLOR: BLACK. GLASS COLOR: BRUE/GREEN.
12. ROOF PARAPET WALL TO CONCEAL ALL MECHANICAL EQUIPMENT. MECHANICAL EQUIPMENT AT ROOF. MOUNTED ON METAL STAND.
13. DECORATIVE LINES ON SMOOTH STUCCO FINISH WITH VINYL REGLET. 1/2" CHANNEL REVEAL WITH PERFORATED FLANGES OR EQUIVALENT.
14. MOTORIZED OVERHEAD TILT-GATE FOR GARAGE ACCESS. PAINTED ALUMINUM.
15. PAINTED STUCCO FINISH BALCONY SLAB LID AND EDGE . COLOR: CEMENT GRAY.
16. GLASS ENTRY DOORS. FRAME COLOR: BLACK. GLASS COLOR: BRUE/GREEN.
17. METAL ENTRY DOORS. FRAME COLOR: BLACK. LEAF COLOR: MARINER. SHERWIN WILLIAMS SW 6766.
18. METAL LOUVERED DOORS. COLOR: BLACK
19. METAL DOOR. COLOR: WHITE.
20. SERVICE ENTRY METAL LOUVERED GATE. COLOR:BLACK
21. ALUMINUM GRILLE
22. RESERVED



1

05 OVERALL EAST ELEVATION

A - 12

Scale: 1/8" = 1'-0"

AAC
PZ23-12000052
04/02/2024

THE DESIGNS INDICATED IN THESE DRAWINGS ARE PROPERTY OF
© deforma studio ALL COPYRIGHTS RESERVED

ARCHI-ONE

200 North Federal Hwy.
Pompano Beach FL



ARCHITECT:
DEFORMA STUDIO INC.
5555 BISCAYNE BLVD., SUITE 2 SW
MIAMI, FL 33137
T: 305 639 2053
F: 305 639 2054
E: INFO@DEFORMASTUDIO.COM
W: WWW.DEFORMASTUDIO.COM

STRUCTURAL ENGINEER:
BCC ENGINEERING
6401 SW 87TH AVENUE SUITE 200
MIAMI, FL 33173
305.670.2350

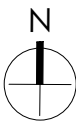
MEP ENGINEER:
RESTEKC
18191 NW 68th AVENUE SUITE 228
MIAMI GARDENS, FL 33015
786.803.8689

CIVIL ENGINEER:
CMPLX
2140 S. DIXIE HIGHWAY, SUITE 308
MIAMI, FL 33133
PHONE: 305.297.2602

LANDSCAPE ARCHITECT:
GSLA DESIGN, INC.
17870 NW 75TH AVE. SUITE 214
MIAMI, FL 33015
PHONE: 305.392.1016

INTERIOR DESIGNER:

KEY PLAN



OWNER / DEVELOPER:

ARCHI
8085 LEMON SERPENTINE LANE
DELRAY BEACH, FL 33446-2247
(561) 351-0208
WWW.ARCHI.GE

Office Registration #AAB26025993

Drawn by: Author
Approved by: Approver

DESCRIPTION DATE

Seal
PROFESSIONAL OF ARCHITECTURE
RECORD STAMP
JAVIER R. BARRERA
FLORIDA REGISTERED ARCHITECT
AR No. AR58563

DESIGN
DEVELOPMENT

EAST
ELEVATION

A - 12

SCALE 1/8" = 1'-0"